



10 Buttermere Gardens

Crosby, Liverpool, L23 0SF

Offers over £220,000



Nestled in the charming Buttermere Gardens of Liverpool, this superbly presented semi-detached house offers a delightful blend of comfort and modern living. With three well-proportioned bedrooms, this property is ideal for families or those seeking extra space. The open plan living area creates a warm and inviting atmosphere, perfect for both relaxation and entertaining.

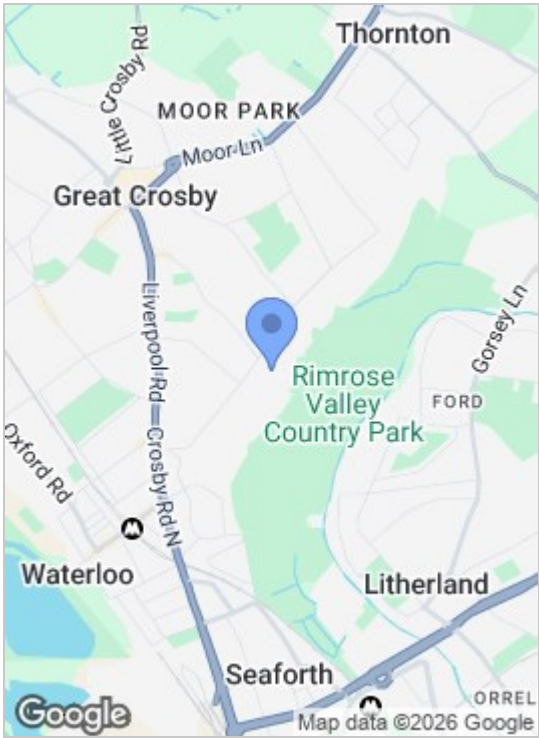
The property boasts a single reception room that flows seamlessly into the dining and kitchen areas, enhancing the sense of space and light. The contemporary design is complemented by tasteful decor, making it easy for you to move in and make it your own.

In addition to the interior charm, this home features a garage and a driveway, providing ample parking and storage solutions. The outdoor space is equally appealing, with a garden that offers a tranquil retreat for enjoying the fresh air.

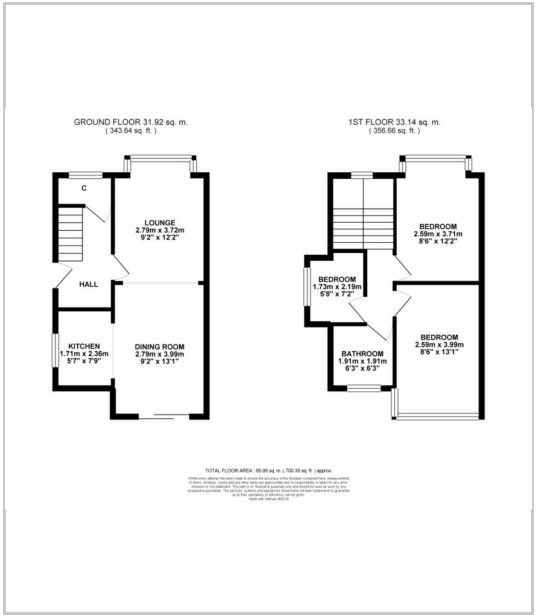
Families will appreciate the excellent local schools nearby, ensuring that education is easily accessible. Furthermore, the property is just a stone's throw from Rimrose Valley Country Park, where you can enjoy scenic



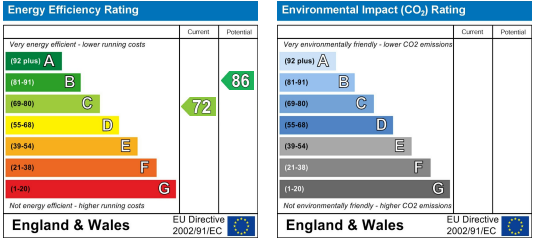
Area Map



Floor Plans



Energy Efficiency Graph



These particulars, whilst believed to be accurate are set out as a general outline only for guidance and do not constitute any part of an offer or contract. Intending purchasers should not rely on them as statements of representation of fact, but must satisfy themselves by inspection or otherwise as to their accuracy. No person in this firms employment has the authority to make or give any representation or warranty in respect of the property.

82 Coronation Road, Crosby, Liverpool L23 5RH

Tel: 0151 909 3003
Email: crosby@abode.group.co.uk
Web: www.abode-group.co.uk

6 Allerton Road, Mossley Hill, Liverpool, L18 1LN

Tel: 0151 601 3003
Email: allerton@abode-group.co.uk
Web: www.abode-group.co.uk

2 Chapel Lane, Formby, Liverpool, L37 4DU

Tel: 01704 827 402
Email: formby@abode-group.co.uk
Web: www.abode-group.co.uk